

PRORPIA GREGORIAŃSKIE

Z GRADUAŁU RZYMSKIEGO

MISSA I

(LUX ET ORGIO)



z pasji
do liturgii

KYRIE

7. X. s.

K Y- ri- e * e- lé- i-son. Ký-ri- e

e- lé- i-son. Ký- ri- e e- lé- i-son.

Chri- ste e- lé- i-son. Chri- ste e- lé- i-

son. Chri- ste e- lé- i-son. Ký- ri- e e-

lé- i-son. Ký- ri- e e- lé- i-son. Ký- ri- e

* ** e- lé- i-son.

Lub:

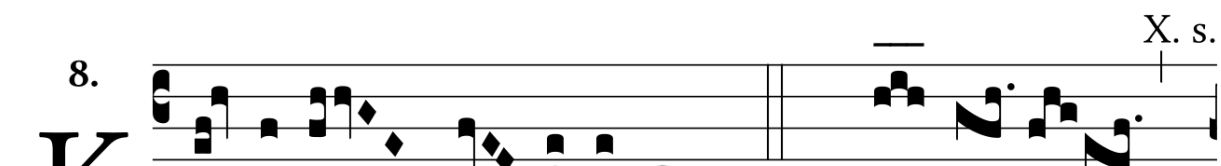
X. s.

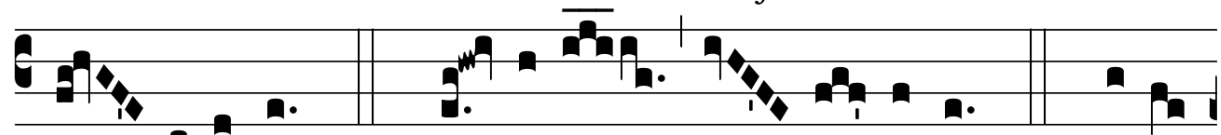
8.

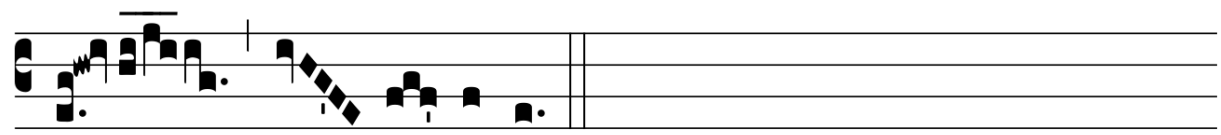
K Y- ri- e * e- lé- i-son. Ký- ri- e
e- lé- i-son. Ký- ri- e
e- lé- i-son. Chri- ste e- lé- i-son. Chri-
ste e- lé- i-son. Chri- ste e- lé- i-son.
Ký- ri- e e- lé- i-son. Ký- ri- e e- lé- i-son.
Ký- ri- e * ** e- lé-
i-son.

PROPRIA GREGORIAŃSKIE

Lub:

8. 
K Y- ri- e * e- lé- i-son. *ij.* Chri- ste


e- lé- i-son. *ij.* Ký- ri- e e- lé- i-son. *ij.* Ký-ri-


e * e- lé- i-son.

SANCTUS

4. X. s.



Sanctus, * Sanctus, Sanctus Dóminus De-us Sába-
oth. Ple-ni sunt cæ- li et terra gló- ri- a tu- a. Ho-sán-
na in ex-cél-sis. Be-ne-díctus qui ve-nit in nó- mi-ne
Dómi-ni. Ho- sánna in excél- sis.

AGNUS DEI

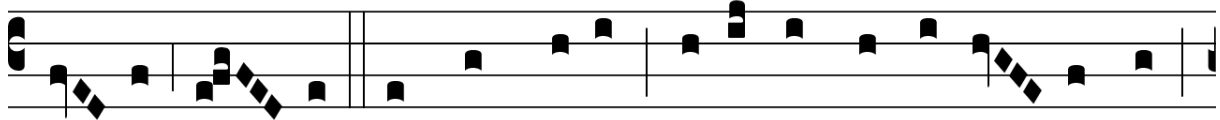
XII. s.

8.

A



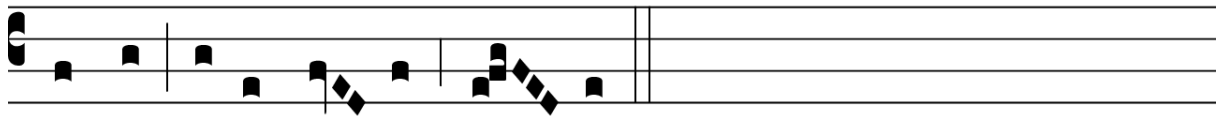
-gnus De- i, qui tol-lis peccá-ta mundi, mi-se-



ré- re no- bis. Agnus De- i, qui tol-lis peccá-ta mundi,



mi-se-ré- re no- bis. Agnus De- i, qui tol-lis peccá-ta



mundi: dona no- bis pa- cem.

ITE MISSA EST



I -te, missa est, alle-lú-ia, alle- lú- ia.

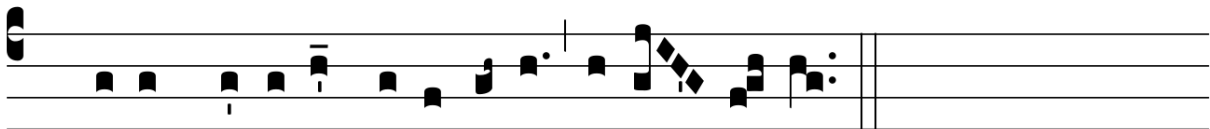


R̃. De-o grá-ti- as, alle-lú-ia, alle- lú- ia.

Lub:

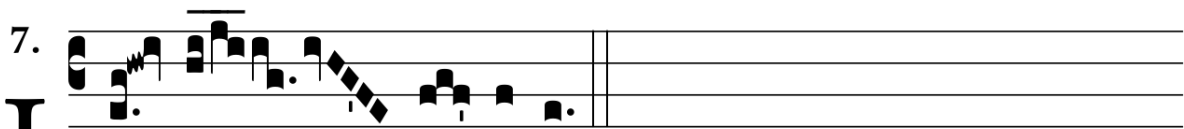


I -te, missa est, alle-lú-ia, alle- lú- ia.

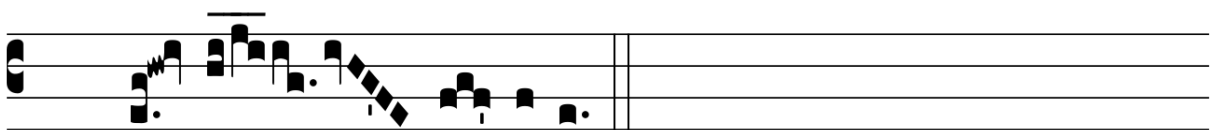


R̃. De-o grá-ti- as, alle-lú-ia, alle- lú- ia.

Lub:



I - te, mis- sa est.



R̃. De- o grá- ti- as.