

PRORPIA GREGORIAŃSKIE
Z GRADUAŁU RZYMSKIEGO

MISSA VI
(*KYRIE REX GENITOR*)



*z pasji
do liturgii*

KYRIE

7. X. s.

K Y-ri- e * e- lé- i-son. Ký-ri- e

e- lé- i-son. Ký-ri- e e- lé- i-son. Chri-

ste e- lé- i-son. Chri- ste e- lé- i-son.

Chri-ste e- lé- i-son. Ký-ri- e e- lé- i-son.

Ký- ri- e e- lé- i-son. Ký-ri- e *

** e- lé- i-son.

SANCTUS

XI. s.

3.

Sanctus, * Sanctus, Sanctus Dóminus De-us Sá-ba-
 oth. Ple-ni sunt cæ-li et ter-ra gló-ri- a tu- a. Ho-
 sánna in ex-cél- sis. Be-ne-díctus qui ve-nit in nó-
 mi-ne Dómi-ni. Ho- sánna in excél- sis.

AGNUS DEI

XI. s.

8.

A

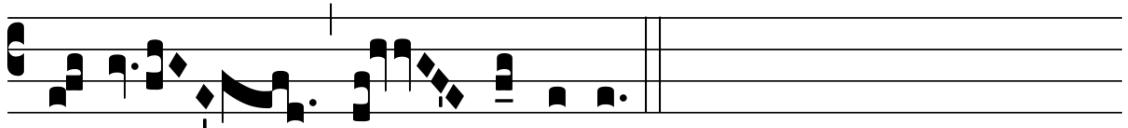
- gnus De- i, * qui tol- lis pec- cá-ta mun-
 di : mi-se- ré-re no-bis. A- gnus De- i, * qui tol- lis
 pec- cá-ta mun-di : mi-se- ré-re no-bis. A- gnus De-
 i, * qui tol- lis pec- cá-ta mun-di : dona no-bis pa-

cem.

ITE MISSA EST

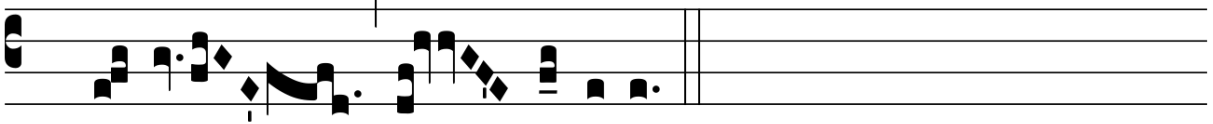
8.

I



- te,

missa est.



R. De- o

grá-ti- as.