

PRORPIA GREGORIAŃSKIE
Z GRADUAŁU RZYMSKIEGO

MISSA XI
(*ORBIS FACTOR*)



*z pasji
do liturgii*

KYRIE

(X) XIV-XVI. s.

1.

K Y-ri- e * e- lé- i-son. *ij.* Chri- ste
 e- lé- i-son. *ij.* Ký-ri- e e- lé- i-son. *ij.* Ký-
 ri- e * e- lé- i-son.

LUB:

1.

K Y-ri- e * e- lé- i-son. *bis* Chri- ste e-
 lé- i-son. *bis* Ký-ri- e e- lé- i-son. Ký- ri- e
 e- lé- i-son.

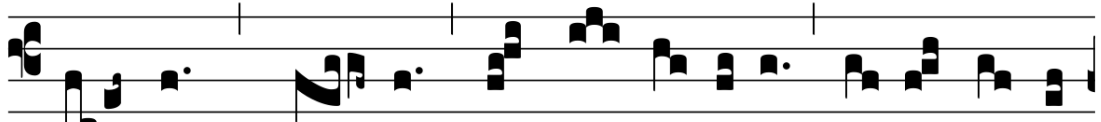
X. s.

SANCTUS

XI. s.

2.

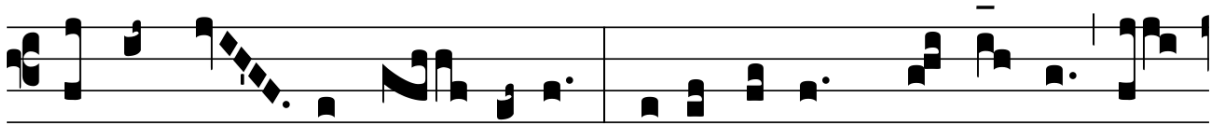
S



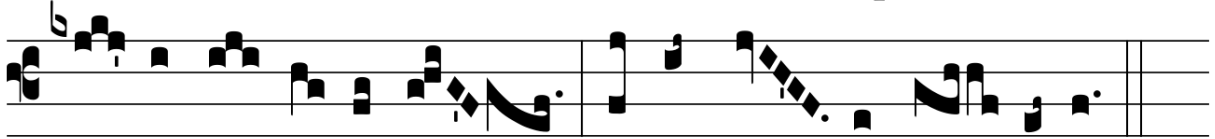
Anctus, * San-ctus, Sanctus Dóminus De- us Sá-ba-



oth. Ple-ni sunt cæ- li et ter- ra gló- ri- a tu- a.



Ho-sánna in ex- célsis. Bene-díctus qui ve-nit in



nó-mi-ne Dómi-ni. Ho-sánna in ex- célsis.

AGNUS DEI

XIV. s.

1.

A

- gnus De- i, * qui tol-lis peccá- ta mundi : mi-se-
 ré-re no-bis. Agnus De- i, * qui tol- lis peccá-ta mun-
 di : mi-se-ré-re no-bis. Agnus De- i, * qui tol-lis pec-cá-
 ta mundi : dona no-bis pa-cem.

ITE MISSA EST

1.

- te, mis- sa est.

R̄. De-o grá- ti- as.