

PRORPIA GREGORIAŃSKIE
Z GRADUAŁU RZYMSKIEGO

MSZA WE WSPOMNIENIE WSZYSTKICH
WIERNYCH ZMARŁYCH
(2 LISTOPADA)



*z pasji
do liturgii*

INTROIT (1)

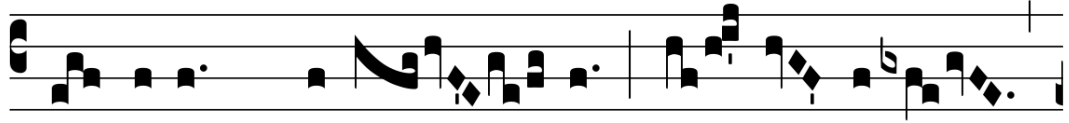
Intr. 6.
R E- quiem * ae- tér- nam do- na e- is
Dómi- ne: et lux perpé- tu- a lú- ce- at
e- is. *Ps.* Te decet hymnus De- us in Si- on,
et ti- bi reddétur votum in Ie- rú- sa- lem. *Ant.* Réquiem.
Qui audis o- ra- ti- ónem, ad te omnis ca- ro vé- ni-
et propter i- niqui- tá- tem. *Ant.* Réquiem. Etsi præ-
va- lu- é- runt super nos im- pi- e- tá- tes nostræ,
tu propi- ti- á- be- ris e- is. *Ant.* Réquiem. Be- á-
tus quem e- legís- ti et assumpsísti, in- ha- bi- tábit
in á- tri- is tu- is. *Ant.* Réquiem. Re- plé- bimur bonis domus
tu- æ, sancti- tá- te templi tu- i. *Ant.* Réquiem.

GRADUAŁ (1)

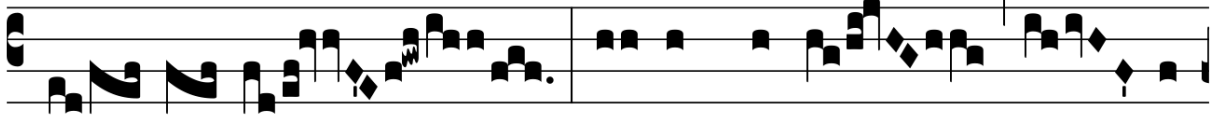
Grad.

2.

R



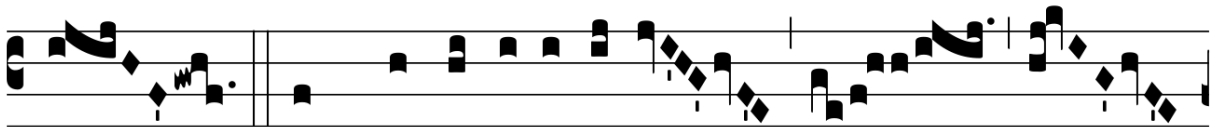
E-qui- em * aetér- nam do- na e- is



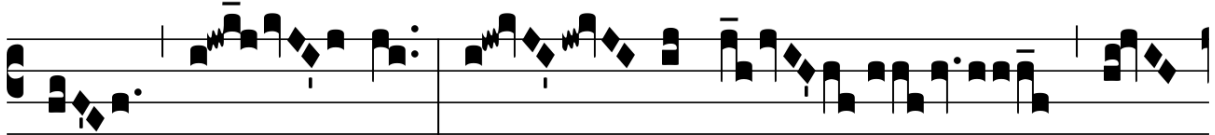
Dó- mi- ne : et lux perpé- tu-



a lú- ce- at e- is.



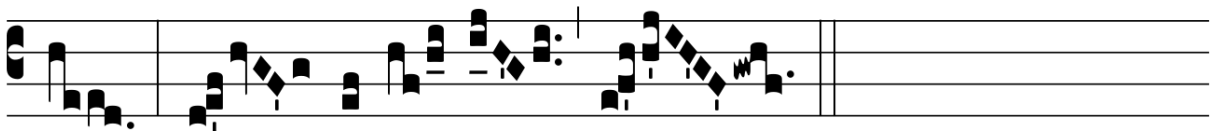
∩. In memó-ri- a aetér-



na e- rit ju-



stus : ab audi-ti- óne ma- la



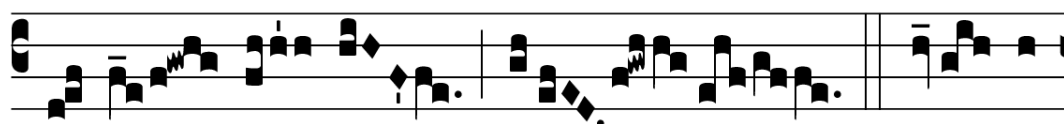
* non tímé- bit.

ALLELUJA (IV)

IV Esdr. 2, 34.35

8.

A

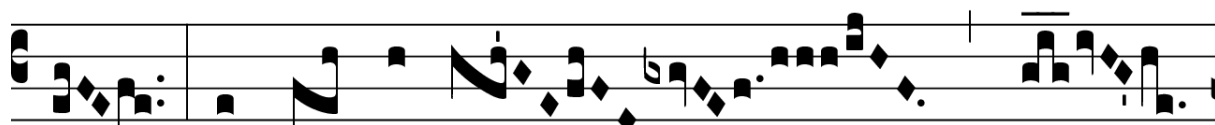


L- le- lú- ia.

Ψ. Ré- qui-



em æ- tér- nam do- na e- is, Dómi- ne:



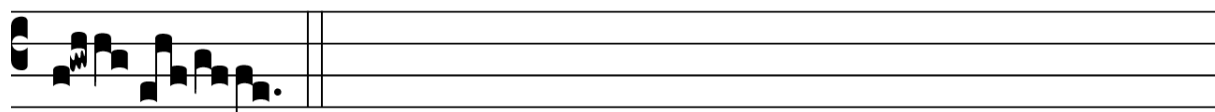
et lux perpé-



tu- a lú- ce- at e- is.



AL- le- lú- ia.



TRAKTUS (ZAMIAST GRADUAŁU I ALLELUJA)

Tract.
8.

A Bsól- ve, * Dó-mi-ne, á-nimas ómni- um fi-
 dé-li- um de-functó- rum ab omni vín- cu-
 lo de-li- ctó- rum. ∷. Et grá- ti- a tu- a il- lis suc-
 currén- te, me- re- ántur e- váde- re ju- dí- ci-
 um ulti- ó- nis. ∷. Et lu- cis aetér- nae
 be- a- ti- tú- di- ne * pér- fru- i.

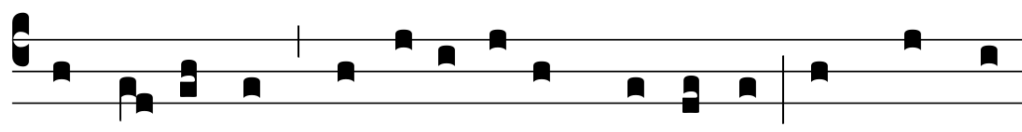
ANTYFONA NA OFIAROWANIE (I)

Offert.
2.

D Omi- ne Je- su Chri- ste, * Rex gló- ri-
 æ, lí-be-ra á-nimas ómni- um fi-dé- li- um de- fun-
 ctó- rum de poenis infér- ni, et de pro-fúndo la- cu : lí-be-
 ra e-as de o-re le-ó- nis, ne absórbe-at e-as tár-ta-
 rus, ne cadant in obscú- rum : sed sígni-fer sanctus Mí-
 cha-el repræséntet e- as in lu- cem sanctam : * Quam
 o-lim Abrahæ promi- sísti, et sé-
 mi- ni e- jus. Ψ . Hósti- as et pre-ces ti-bi Dómi- ne
 laudis of-fé-rimus : tu súsci-pe pro a-nimábus il-lis, qua-
 rum hó-di- e memó-ri- am fá-cimus : fac e-as, Dómi- ne,
 de mor-te transí- re ad vi-tam. * Quam o-lim.

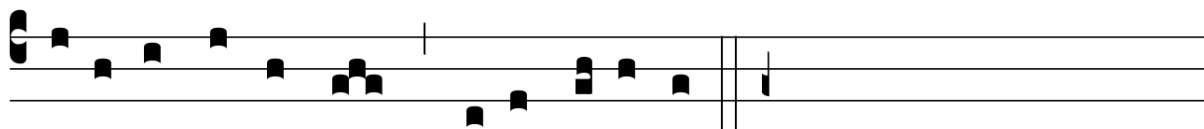
ANTYFONA NA KOMUNIE (1)

Comm.
8 G.



L

ux æ-térna * lú-ce-at e- is, Dómi-ne: cum sanctis



tu- is in æ-térnum, qui- a pu- is es.