

PRORPIA GREGORIAŃSKIE

Z GRADUAŁU RZYMSKIEGO

OKRES ZWYKŁY

TYDZIEŃ XXXIV

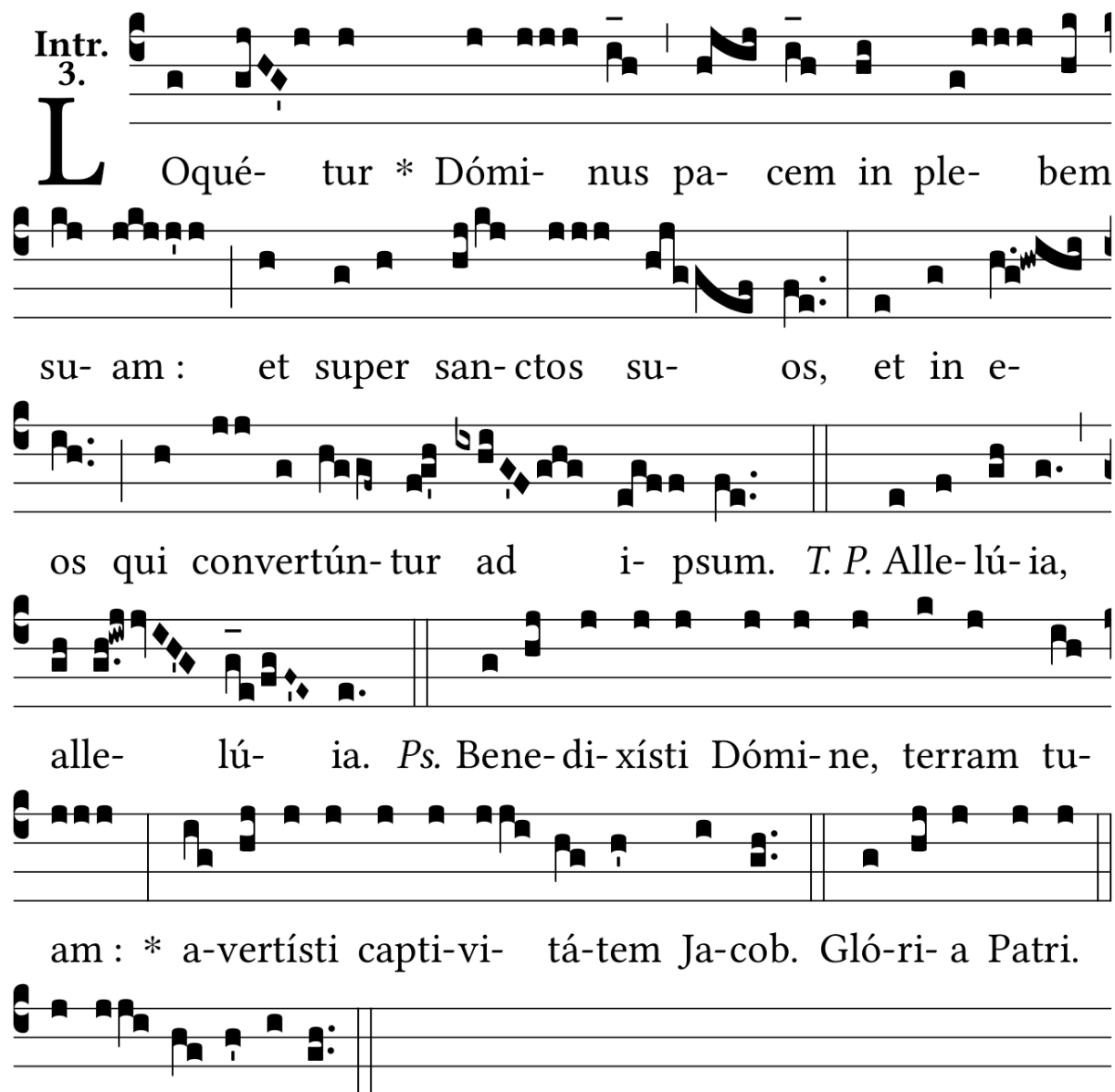
(POZA NIEDZIELĄ)



*z pasji
do liturgii*

INTROIT

Intr.
3.



L Oqué- tur * Dómi- nus pa- cem in ple- bem
 su- am : et super san- ctos su- os, et in e-
 os qui convertún- tur ad i- psum. *T. P.* Alle- lú- ia,
 alle- lú- ia. *Ps.* Bene- di- xísti Dómi- ne, terram tu-
 am : * a- vertísti capti- vi- tá- tem Ja- cob. Gló- ri- a Patri.
 E u o u a e.

GRADUAŁ

Grad.
5.

B Ene- dí- ctus es, * Dómi- ne,

qui in- tu- é- ris a- bús- sos, et se-

des su- per Ché- ru- bim. Ψ . Bene- dí-

ctus es Dó- mi- ne, in

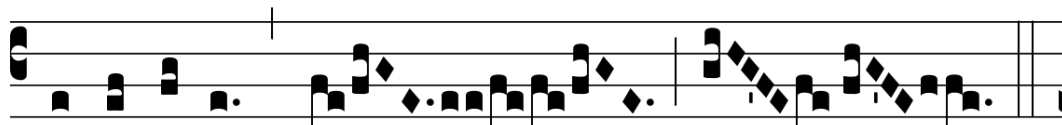
firmamén- to cæ- li, et laudá- bi- lis * in sée-

cu- la.

ALLELUJA

8.

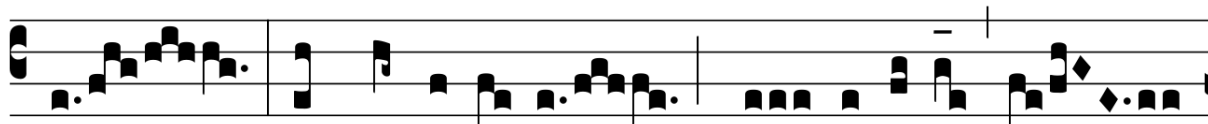
A



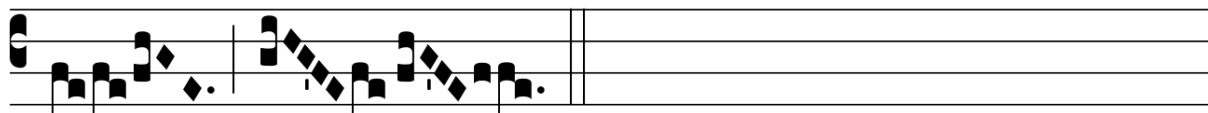
L-le-lú-ia. * *ij.*



Ψ. Be- ne-díctus es, Dómi-ne De- us patrum nostró-

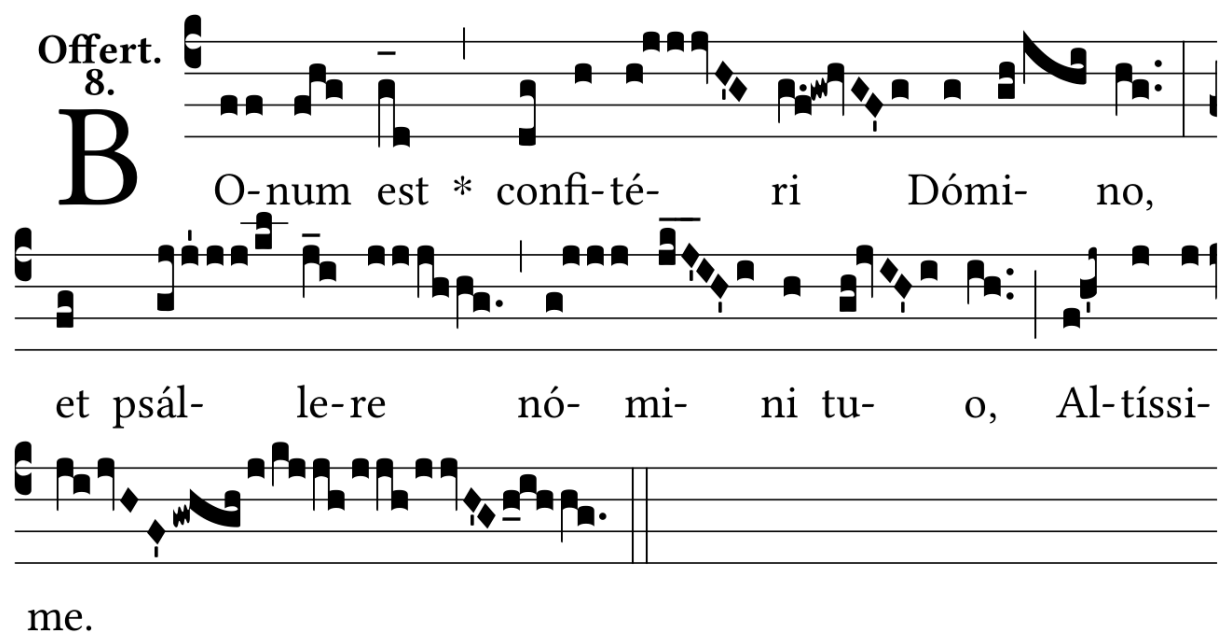


rum, et laudá-bi- lis * in sáecu-la.



ANTYFONA NA OFIAROWANIE

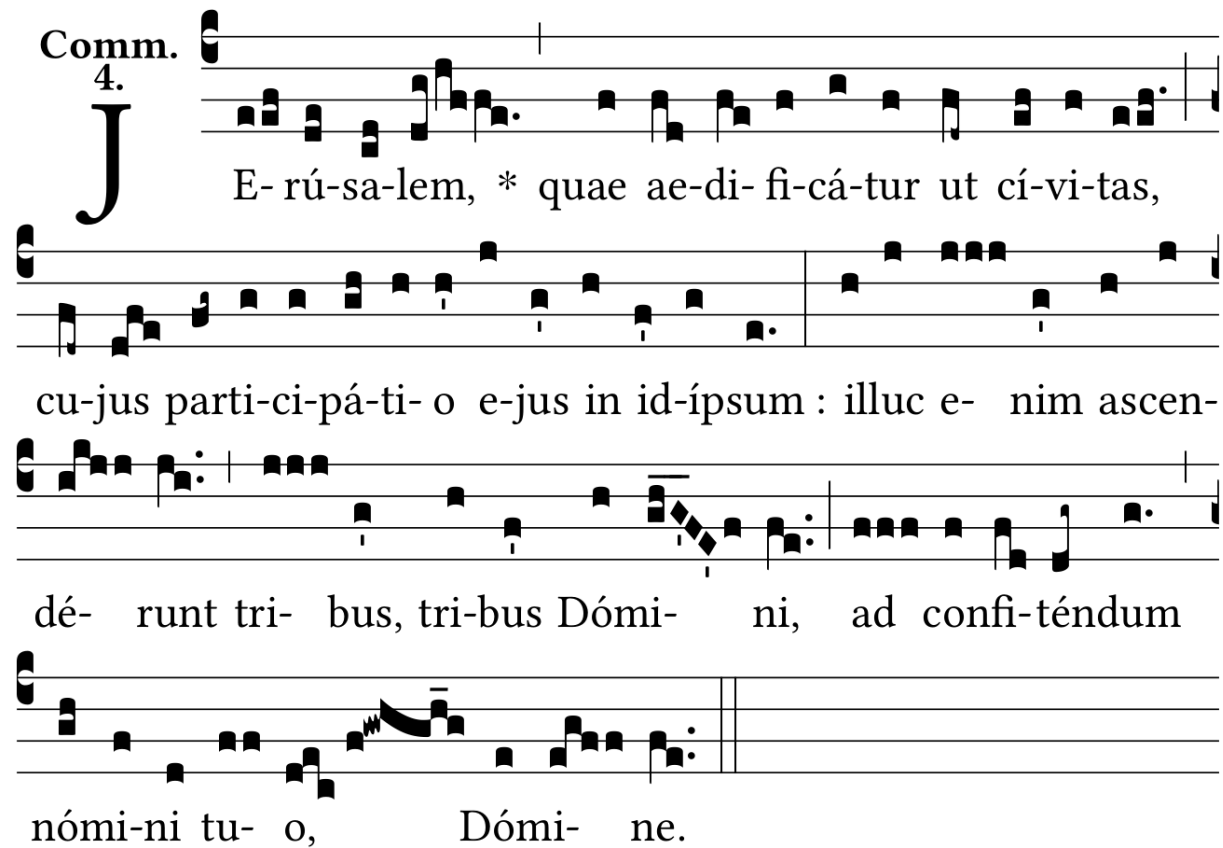
Offert.
8.



B O-num est * confi-té- ri Dómi- no,
et psál- le-re nó- mi- ni tu- o, Al-tíssi-
me.

ANTYFONA NA KOMUNIE

Comm. 4.



J E-rú-sa-lem, * quae ae-di-fi-cá-tur ut cí-vi-tas,
 cu-jus parti-ci-pá-ti-o e-jus in id-ípsum : illuc e- nim ascen-
 dé- runt tri- bus, tri-bus Dómi- ni, ad confi-téndum
 nó-mi-ni tu- o, Dómi- ne.

Ps 121, 1. 2. 5. 6. 7. 8. 9.